

# The most complete solution to **Flight Dispatch, Crew Briefing** and **Journey Logging**



BUILT TO GET YOU OFF THE GROUND

Whether you are using traditional paper-based dispatch and briefing, or using digital technology, *skybook* allows you to manage and analyse your flight sectors effectively, saving time and reducing costs for your airline.



30 YEARS IN THE MAKING

**bytron**  
aviation systems

**skybook** is automated, integrated,  
flexible, intelligent and built around you.

The airline industry is driven by *data*, data for flight costs, data for flight performance, global weather forecasting data, NOTAM/ SNOWTAM and ASHTAM, FIR information and not forgetting important organisational notices and alerts between management, operational teams and the flight deck.

With over 35 years of experience in the aviation industry, we get it. We understand the challenges managing this data brings and how it affects time and costs on a daily basis.

We understand the daily challenges faced by operators to draw in each piece of vital data, and paint the most accurate picture of every flight on a sector by sector basis, and our **skybook** application was created to help relieve and manage these pressures.



**skybook** works intelligently, using automated technology to control data from some of the most trusted data feeds in the world. Our automation removes the need for manual information gathering, simplifying the process greatly and making it all available at the touch of a button via a web-based portal and/or app.

“

We recently teamed up with **bytron** to provide **skybook** as a key offering in our portfolio, to enhance the benefits delivered to our customers by better connecting dispatchers with crew.

**skybook** represents a truly integrated approach that brings together market-leading functionality from both companies for the efficient management of flight data, crew briefing and monitoring operations.

**Mathew Buettner**

Director – Jeppesen Flight Planning & Dispatch



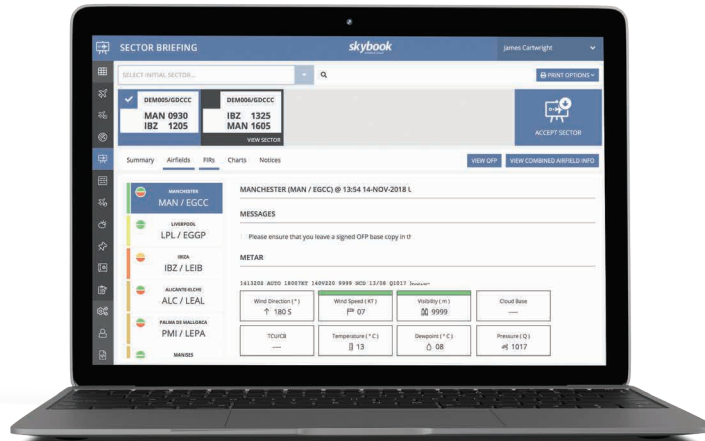


ENHANCING DAILY FLIGHT OPERATIONS

**bytron**  
aviation systems

Delivering the right data, to the  
right place, at the right time.





# Flight Operations Portal

Enhance your airline dispatch and planning operations with our intuitive, user-friendly system that delivers the right data, to the right place, at the right time, in a format that makes it easy for readers to work through.

Through our Flight Operations Portal, you can view all scheduled and operational flights, review the impact of significant weather and danger areas along the route as well as check detailed weather, NOTAM and Route plot charts (including ETOPS).



## BESPOKE AND CONFIGURABLE

**skybook** is built around you. All settings are tailored and the data sets imported are based on your operational criteria and minima.



## SEAMLESS

**skybook** offers a seamless transition from current dispatch and briefing processes, to slick, more reliable, modern digital processes making core data available through a single portal at the touch of a button.



## FLEXIBLE

Initial configuration is just the start. **skybook** can be personalised over time through our comprehensive range of settings that tailor each module. If you make operational changes, **skybook** will be quick to change with you.



## BRIEFING

Our comprehensive briefing packs contain Fuel Plan(s), METAR, TAF, NOTAM, ASHTAM, SNOWTAM, Chart NOTAM, Tracks, Weather Charts, Upper Wind and Temperature Charts, ETOPS, Route Plots, RAIM+, Crew Notices, MEL, Significant Weather & NOTAM highlighting/filtering.



## Electronic Flight Bag (EFB)

Our ground-based Flight Operations Portal and Electronic Flight Bag (EFB) can be partnered together to enhance operational benefits and the viewing and collection of real-time data. The Web Portal can be implemented in the first instance and the EFB can be added at a later date.





KEEPING YOUR FLIGHTS ON TIME

**bytron**  
aviation systems

Improve accuracy, efficiency and accountability by accessing the best data sets available. All via a single online portal.





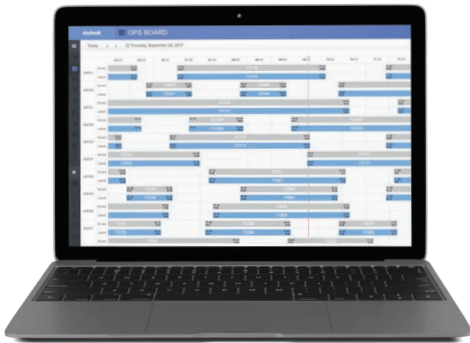
## Dispatch Monitor

**Reduce workloads, improve efficiency and safety with our award winning Dispatch Portal.**

Dispatch teams can review flight plans, current weather and NOTAM for departure, destination and alternates for every flight. The Dispatch Monitor highlights flight records when briefing material has been printed or downloaded to the EFB logging which crew member has printed it.

The Dispatch Monitor features a wealth of information which includes but is not limited to:

- Flight Number, Registration
- Departure, Destination and Alternates
- STD/ETD/ATD, STA/ETA/ATA
- Sector Signed for, Sector Signed off
- Commander's name
- Off blocks, Airborne
- Landed, In-blocks
- Flight summary data and commander's voyage acceptance



## Ops Board

**The Ops Board module provides an aircraft based gantt view of both planned and actual sector data.**

The viewable time window is configurable. Each 'actual' sector block depicts the current known status of the flight based on the data received back from devices:

- Departed early
- Departed on time
- Departed late
- Arrived early
- Arrived on time
- Arrived late



## Airfield Watch

**skybook can't control the weather but it can arm you with a detailed global overview for every one of your departure, destination and alternate airfields, that automatically refreshes frequently to ensure you always have the latest information to hand.**

Airfield Watch generates a clear detailed picture of both MET information and NOTAM in a single portal. Use our intelligent coloured alerting to highlight worsening weather conditions or NOTAM that could affect your ability to use an airfield if conditions have fallen outside of what is operationally acceptable, based on your minima.

Simple colour coded graphics on each segment show key weather parameters and NOTAM. Should conditions change, **skybook** updates the relevant segments making problems very easy to identify and respond to accordingly.



## THE BRIEFING INFORMATION YOU REALLY NEED

**bytron**  
aviation systems

Take control of your briefing packs, reduce pack sizes and ensure your crews get the detailed yet concise flight briefings they really need.





## Briefing Planning Portal

The briefing portal allows operations staff and aircrew if required, to access detailed briefing information that can also be used for planning.

This module gives access to:

- Raw METAR & TAF
- Decoded METAR & TAF
- Airfield and FIR NOTAM
- Satellite Imagery
- Charts
- Tracks
- RAIM Reports
- Storms and Volcanic Ash

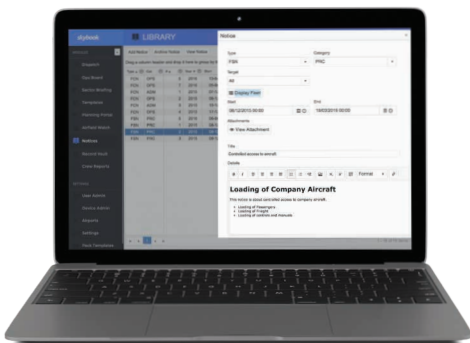


## Narrow Route Briefing

Narrow Route Briefings make full use of our unique advanced filtering options that help skybook stand out from other systems available.

Narrow route crew briefings are based on the route defined in your flight plans. These briefings contain detailed METAR, TAF, Airfield and FIR NOTAM, Upper Wind and Temperature Charts, SigWX charts, SIGMETs and route plots including ETOPS, Company Notices and Supplementary Information and Documentation

Created in a matter of seconds at the touch of a button, crew briefings can be accessed directly from the Electronic Flight Bag or exported into PDF so they can either be saved digitally or printed as a hard copy.



## Operational Notices

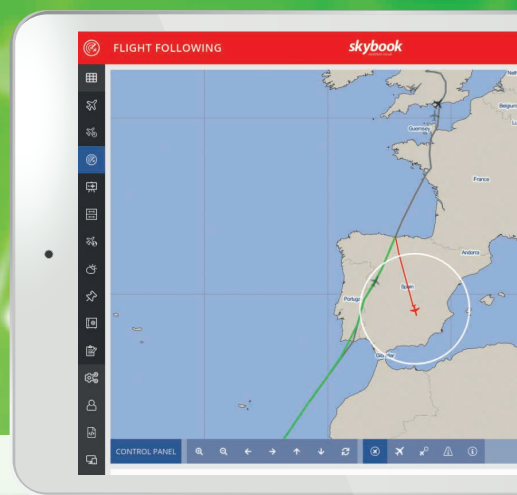
With **skybook**, it's easy to create, maintain and distribute Flight Crew Notices (FCN), Flight Safety Notices (FSN), Cabin Crew Notices (CCN) and more depending on your requirements.

**skybook** automatically alerts your Flight Crew to any notices or documents that are relevant to them, whether on general release, specific to their fleet, or specific to them personally.

You can create and maintain digital libraries for upload using in-house word processing and publishing software. Third-party digital libraries from the likes of Airbus, Boeing, CAA and IATA can also be used as additional content to be included within notices.

WGR632  
324.8 Kts 6785 ft

PGM197  
325.9 Kts 6785 ft



## FLIGHT FOLLOWING

Next generation of aircraft tracking tools,  
helping operators to achieve compliance  
with GADSS recommendations.

WGR632  
324.8 Kts 6785 ft



# Flight Following

**skybook** Flight Following is the next generation of aircraft tracking tools, helping operators to achieve compliance with GADSS recommendations via an advanced portal that provides seamless access to all vital information.

## DRIVEN BY TECHNOLOGY

**skybook** Flight Following generates a comprehensive route plot extracted directly from each flight plan and uses positioning information taken directly from real time ACARS and/or ADS-B updates to track each aircraft during the duration of its flight. Actual flight progress is shown against planned progress on a global display that can be easily switched to show all active flights or alternatively, to focus on a single flight.

## ACTIVE ALERTING

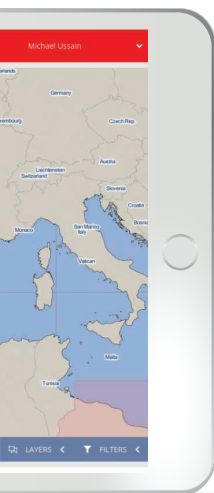
Flight Following receives aircraft position information directly from each operator, using this information to generate detailed route updates showing actual progress against planned. Should an aircraft stray off the planned route or fail to provide a position update during a flight, **skybook** immediately raises the alarm by creating an alert against the flight, helping to ensure appropriate action is taken right away.

## INCREASED GLOBAL AWARENESS

Our automated skybook data feeds ensure that Flight Following monitors far more than just flight progress. **skybook** continuously imports and reviews global weather and NOTAM information, comparing this against user settings and minima to identify all emerging issues that could affect flight operations. If a problem is identified an alert is generated ensuring action can be taken.

## FLIGHT FOLLOWING TECHNICAL

- Track real time flight progress
- Active alerting for flights, weather and NOTAM
- METAR, TAF and NOTAM for all Dep/Dest airports
- Waypoint details (flight level, fuel and timings)
- Customisable dashboard allowing users to select and view data of most importance





**skybook**  
aviation cloud

THE COMPLETE SOLUTION

**bytron**  
aviation systems

Making paper a thing of the past for  
your operations team and aircrew.

DESIGNED WITH PILOTS...FOR PILOTS



# Electronic Flight Bag

The **skybook** Electronic Flight Bag application is award winning and proven to reduce aircrew workloads through intuitive design, seamless integration, quick navigation and most of all, by focussing on the most vital information for each sector.

Delivering comprehensive intuitive Digital Briefing's that are created using our class leading data sets, the app is available for both Apple and Android devices delivering a user interface that is second to none.

Our app also features the skybook Interactive OFP and Journey Logging, giving crews the ability to log actual data, capture any delays, actual fuel usage, unexpected expenses or route changes during a flight, providing a detailed overview of planned versus actual flight performance.



Our digital briefings will help you save time, improve efficiency and accuracy and can help you reduce operating costs.



## DIGITAL AND INTERACTIVE

Reduce printed material and your carbon footprint by switching to our digital crew briefings. Crews will have access to detailed briefing material and real time updates via our app. Available for IOS and Android devices.



## REAL-TIME FLIGHT DATA

Record waypoint information with our truly interactive OFP and generate a fully digital journey log by utilising our crew, de-icing, ground services, delays and commanders reports modules



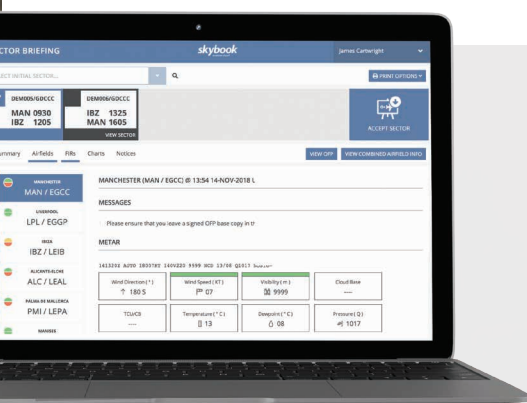
## SYNCHRONISED

Upon internet connectivity, our EFB will sync all logged journey data with the ground based web portal, creating a repository of flight information that can be instantly accessed and used for reporting. No need to wait for paper reports to come back.



## SINGLE POINT OF TRUTH

**skybook's** Flight Ops Portal analyses journey log data, providing insightful management reports based on actual flight performance, helping you to understand every aspect of your flights from departure to destination.

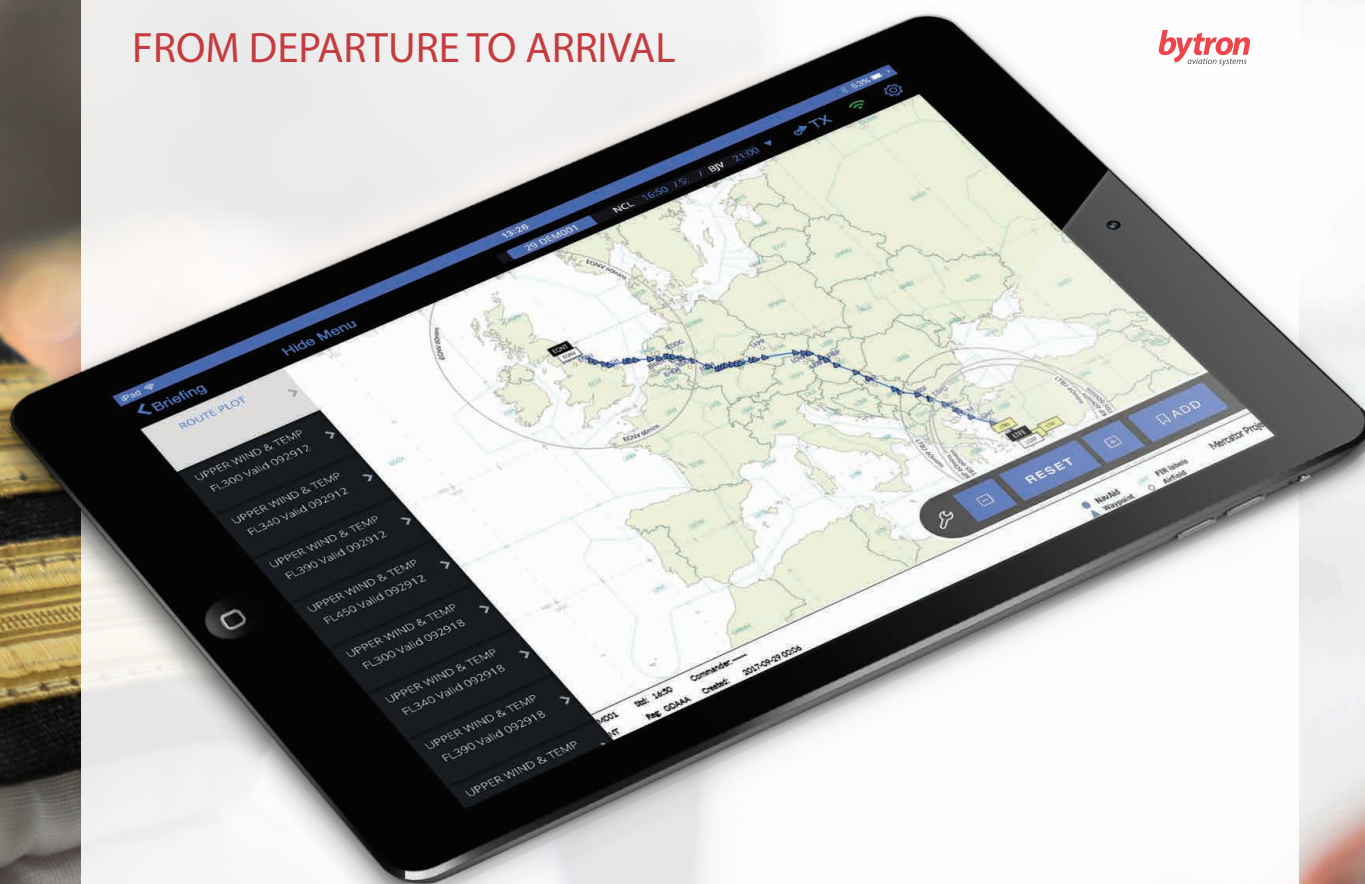


# Flight Dispatch Portal

Our ground-based Web Portal and Electronic Flight Bag (EFB) can be used independently, or partnered together to enhance operational benefits and the viewing and collection of real-time data. The Web Portal can be implemented in the first instance and the EFB can be added at a later date.

## FROM DEPARTURE TO ARRIVAL

**bytron**  
aviation systems



Our Electronic Flight Bag delivers a truly paperless flight deck thanks to seamless access to core data for your aircrew, improving briefing delivery, data capture and flight logging via a single device.



# Digital Briefings

Our briefing packs have been used and accredited by numerous airlines and CAA's and have passed IOSA and State Authority audits. They are class leading, environmentally friendly, and it's why our app makes such a difference.

## OUR DIGITAL BRIEFINGS FEATURE THE LATEST DATA COVERING:

- METAR, TAF, Upper Wind and Temp Charts
- Airfield and FIR NOTAM
- SigWX charts
- Company Notices
- SIGMETS/ASHTAMS/Storms
- Route plots including detailed ETOPS Charts
- Unique colour coding highlights alerts
- Supplementary Information and Documentation

# Journey Logs

Give your aircrews access to the technology they need. Far more accurate than simply updating the OFP, the skybook Journey Log is structured and easy to use delivering a fully interactive OFP that can be updated and transmitted back to flight operations in near real time.

## CAPTURE CRITICAL FLIGHT DATA WITHIN THE INTERACTIVE OFP:

- Actual flight level, time over point and fuel remaining
- Departure/Arrival ATIS and Clearances
- Fuel Specific Gravity and Uplift
- Waypoint information can be updated based on ATC changes
- Notes can be added to the PLOG and waypoints
- Record Off-block, airborne, touchdown & on-blocks
- Flight level clearances and RSVM entry
- Easy Route Direct
- Auto-highlighting of potential issues i.e. lower than planned fuel level
- Timed waypoint and RVSM input prompts and simple re-routing to alternates

## RECORD JOURNEY DATA AS IT HAPPENS AND UNDERSTAND THE REAL COSTS AND PERFORMANCE OF EACH FLIGHT:

- Crewing
- De-Icing (data/time of activity, area de-iced, type of fluid and temp etc)
- Ground Services (GPU, pushback, water uploaded, cleaning undertaken, cost)
- Delays
- Sign offs (sector/voyage acceptance, sector and voyage sign off)
- Reports (incident time/date/location, ASR/MOR required, report title, description and type)

UPGRADING TO SKYBOOK

A professionally managed transition to embed **skybook** into your organisation.



## Integrations

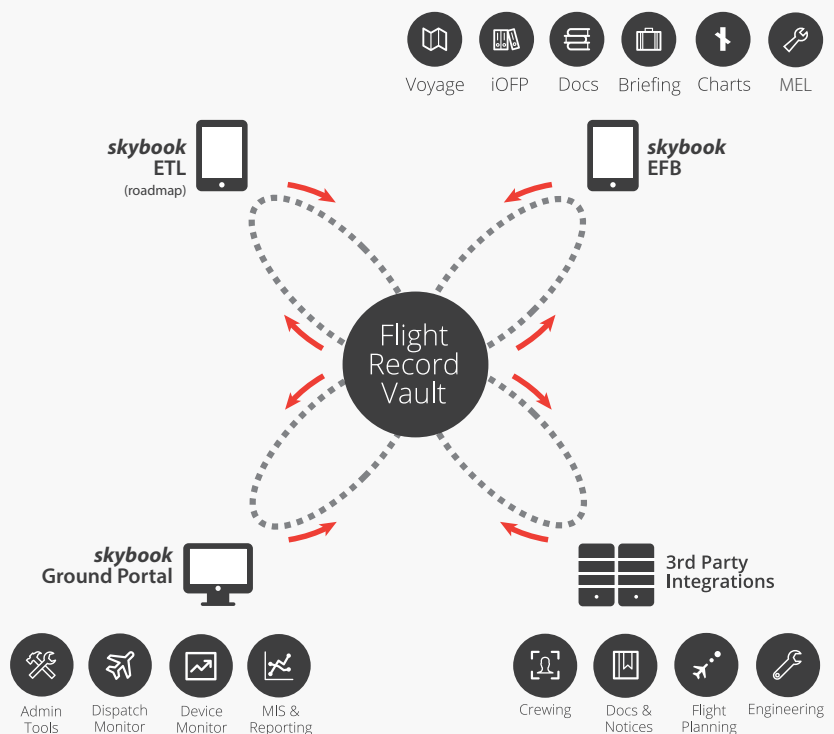
When it comes to migrating from paper-based processes to digital dispatch and briefing we put you back in control. **skybook is flexible and so are we.**

Our goal has always been to enable airlines and operators to take small, manageable steps towards a modern, efficient and effective dispatch and briefing process. Fully supported by our technical team during the initial configuration and implementation phases right through to providing you with technical support via our responsive support teams, online knowledgebases and all the training you will require to make your journey as smooth as possible.

Integration is the key to accessing and managing all your data via a single portal



SIMON CLAYTON, TECHNICAL DIRECTOR



3rd Party Systems can integrate directly with skybook using our API

### API INTEGRATION

Third parties interface with the **skybook** Management System by utilising our comprehensive API web-services.

These services allow third-party systems to transmit and receive data to/from the **skybook** data centre.

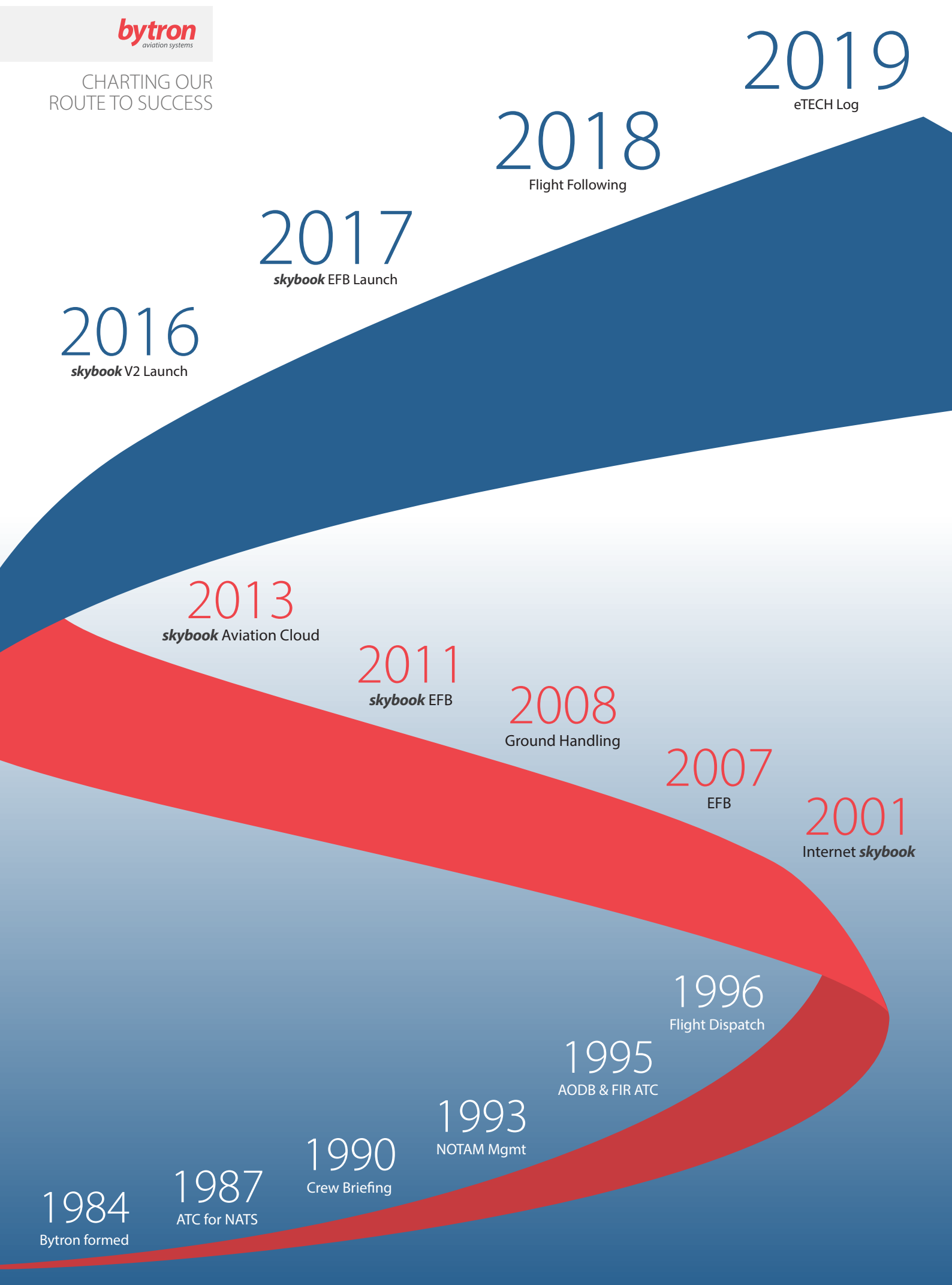
We integrate the information in to our systems and provide a central repository for management information and air-to-ground communications.

### DATAFEED MANAGEMENT

**skybook** would be nothing without the most reliable, accurate and timely data, matched to your exact operational requirements.

The datafeeds used by **skybook** are taken from the most credible sources, all based on your operator settings and operational minima.

Each piece of information is reviewed in detail to identify and alert you to any issues that may affect your operations before it reaches you.







# Intelligent, automated, integrated...and built around you

## OUR PROMISE TO YOU

From the outset, we work closely with our clients to understand their operating processes, procedures and daily challenges. But most importantly to build an ongoing relationship that benefits both of us.

This is vital as we use the information obtained from our relationship to configure **skybook** to the operational requirements, criteria and minima of each customer. Integrating core airline systems with **skybook**'s own data feeds to ensure that the information delivered to operations staff and flight crew is the most up to date and applicable for the sectors being flown

Every customer configuration is thoroughly tested before we progress to live status, as agreed with our clients, ensuring all settings meet your exacting requirements and all system integrations work as they should. Following our in-depth training you are then able to maintain these settings for yourselves using our intuitive administration tools.

We ensure that our clients feel supported during the transition across to **skybook**, with an extensive range of online guides and training manuals just a 'button click' away. If required, we can also arrange super user training to help you develop **skybook** knowledge and resilience in house.

**skybook** is reliable and dependable but should you experience something you can't understand or put right, our support team can be accessed 24hrs a day throughout the year.

SHANE SPENCER, MD



MAY 2019

SOME OF OUR  
CLIENTS INCLUDE:

